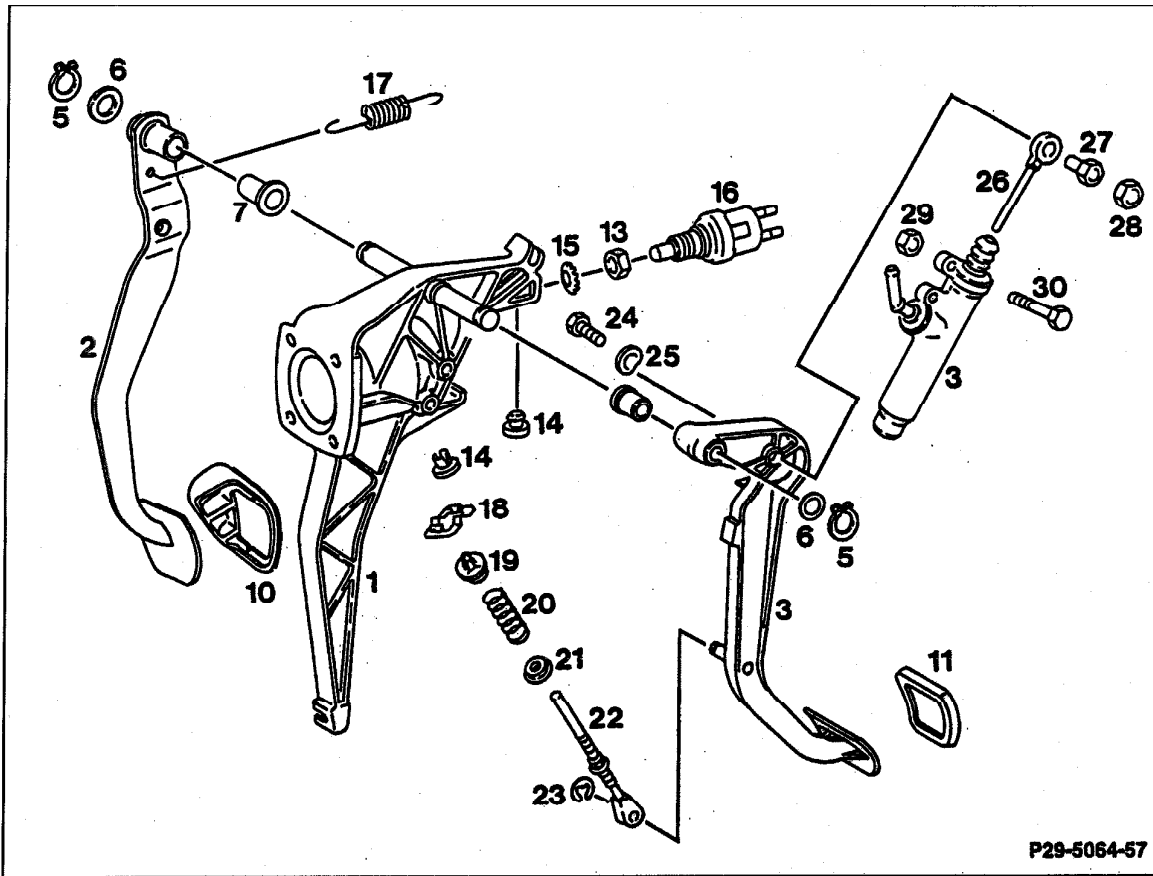


29-330 Disassembling and assembling pedals



P29-5064-57

P29-5064-57

Pedals, complete	Remove, install (29-320).
Stop lamp switch (16)	Remove, adjust after installation (42-040).
Return spring (17)	Detach, attach.
Brake pedal (2)	Pull off after removing circlip (5) and washer (6). Check bearing bush (7) for wear.
Pad on brake pedal (10, 11)	Check for wear.